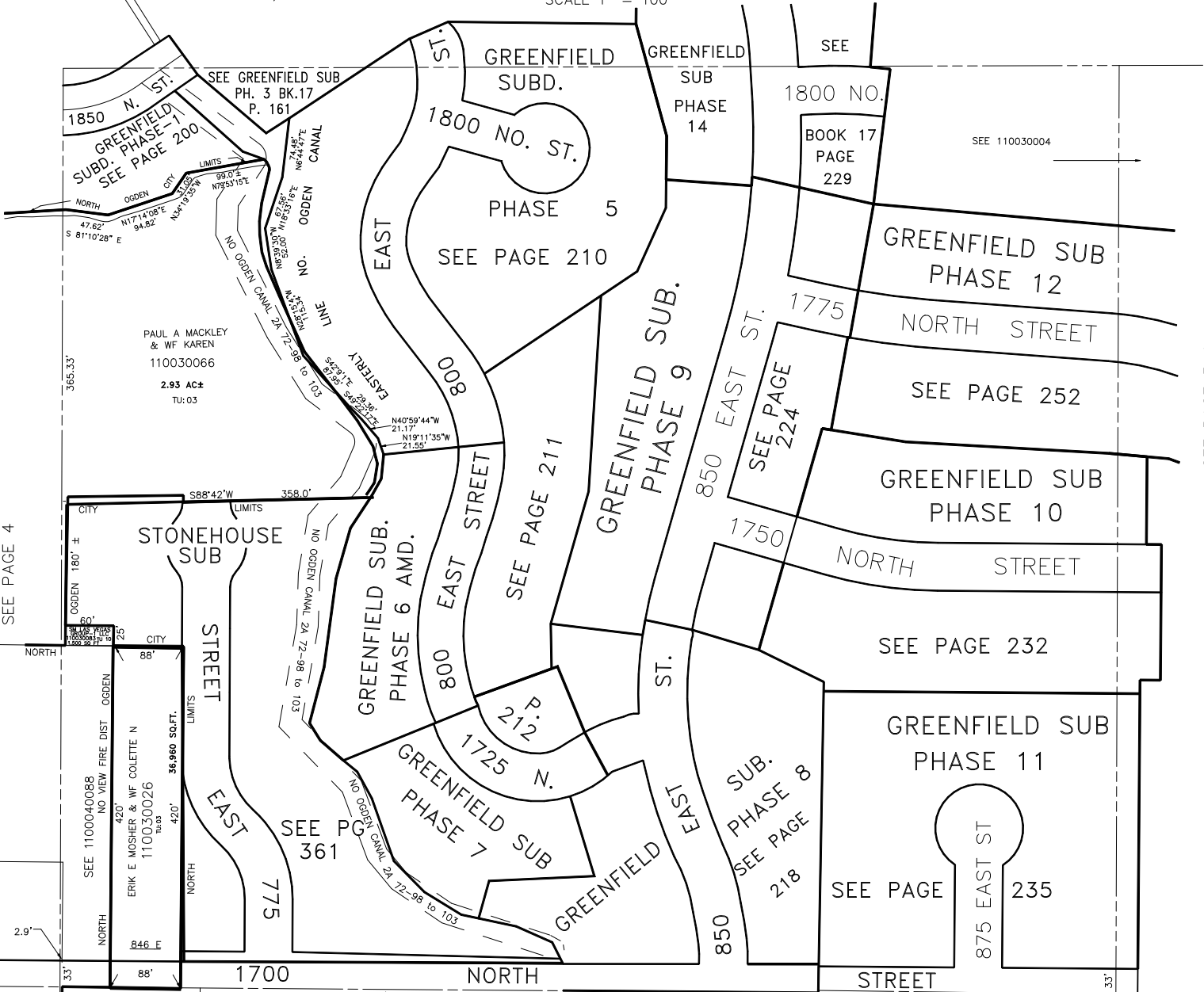


N.W. 1/4 OF N.E. 1/4 OF SECTION 4, T.6N., R.1W., S.L.B. & M.

IN NORTH OGDEN CITY  
SCALE 1" = 100'

TAXING UNIT: 03,10



SEE PAGE 4

SEE PAGE 3-1

SEE 110040003

SEE PAGE 3-3

SEE PAGE 3-3

\*1700 N. ST. ALIGNMENT 40-12 27-JUN-95